

PLU THEATRE & DANCE  
presents

the

# PROM

Book & Lyrics by **CHAD BEGUELIN** | Book by **BOB MARTIN**  
Music by **MATTHEW SKLAR**



Director **JEFF CLAPP** | Music Director **AMY BOERS**  
Choreographer **SARAH SEDER**

**PLU** | SCHOOL OF  
MUSIC, THEATRE & DANCE

# THE PROM

Book & Lyrics by Chad Beguelin

Book by Bob Martin

Music by Matthew Sklar

## PRODUCTION TEAM

DIRECTORS.....Jeff Clapp\*, Ahmira Elyard-Jaeger\*  
MUSIC DIRECTOR/CONDUCTOR.....Amy Boers  
CHOREOGRAPHERS.....Sarah Seder, Soraya Martinez  
SCENIC DESIGNER.....Richard MacKenzie  
COSTUME DESIGNER/COSTUME SHOP MANAGER...Kathleen Anderson\*  
LIGHTING DESIGNER.....Jacob Viramontes\*  
PROPS DESIGNER.....Jeff Clapp\*  
TECHNICAL DIRECTOR.....Keenan Minogue  
STAGE MANAGER.....Emma Peters\*

## PRODUCTION CREW

ASSISTANT MUSIC DIRECTOR.....Jessica Heinauer  
ASSISTANT LIGHTING DESIGNER.....Bailey DeLozier\*  
VIDEOGRAPHER.....Oscar Oberg  
ASSISTANT STAGE MANAGERS.....Marley Bjornstad\*, Addy Keller\*  
SCENIC CHARGE.....Dorothea Koetje\*  
SCENIC CONSTRUCTION.....Lucille Bell, Marley Bjornstad\*, Jade Brunner,  
Evergreen Burling\*, Kay Fitton\*, Glen Fritz\*, Alonna Hall\*, Samantha  
Katz\*, Kiana Kendall\*, Dorothea Koetje\*, Clover Laguz\*, Steph Lara\*,  
Braeden Linkenback\*, Alexander Mackenzie, Kyra McCloud\*, Ashley  
Midlo\*, Will Morgan, Edan Reitan\*, Lauren Rigby, Cordelia Seil\*, Beno  
Sher, Joseph Stitzel\*  
ASSISTANT COSTUME DESIGNERS/COSTUME SHOP ASSISTANTS.....  
Samael Blacknell, Evergreen Burling\*, Dorothea Koetje\*, Clover Laguz\*,  
Phoenix Leiseth, Ahnalise Neagle, Beno Sher, Monroe Torkelson\*  
LEAD ELECTRICIAN.....Glen Fritz\*  
ELECTRICIANS.....Naomi Dugaw\*, Kay Fitton\*, Glen Fritz\*, Erika Leblanc\*  
Oscar Oberg, Cooper Perez\*, Edan Reitan\*, Cordelia Seil\*  
PROPS CREW.....Glen Fritz\*, Alyssa Ketchum, Cooper Perez\*, Oscar Oberg

## MUSICIANS

Joseph Alvarez, Pablo Arellano Carden, Fiona Ashton-Knochel, Meaghan  
Austin-Cortez, Devin Bianchi-Rivera, Amy Boers, Kindra Gonsalves, Felix  
Halverson, Rory Lacy, Jess Mason, Cameron McLennan, Joshua Caden  
Valerio

## RUNNING CREW

ASSISTANT HOUSE MANAGER.....Alyssa Ketchum  
LIGHT BOARD OPERATOR.....Jade Brunner  
SOUND BOARD OPERATOR.....Isaac Larson  
SOUND ASSISTANT.....Jeremy McCarter  
STAGE CREW/USHERS.....Rowan Burk\*, Brandon Cantu,  
David Cope-Powell, Zane Davenport\*  
COSTUME/WARDROBE CREW.....Ashton Allen, Abigail daCorte\*,  
Lauren Rigby, Josiah Rodriguez, Cassandra Vega\*  
SPOTLIGHT OPERATORS.....Parker Brown\*, Oscar Oberg, Beno Sher

## SPECIAL THANKS

Cameron Bennett, Dean of the College of Professional Studies; Associate Dean Brian Galante of the School of Music, Theatre and Dance; PLU Hospitality Office; Tina Allen; Patrick Brockwell; Art Giddings; Liz Jacobsen and Stadium High School; Travis Pagel; Tom Smith

## COMING NEXT...

*Alpha Psi Omega and Umbrella Organization present*  
Ken Ludwig's *Sherwood: The Adventures of Robin Hood*  
April 24-26 @ 7:30pm; Studio Theater

DANCE 2025  
May 2-3 @ 7:30pm; Eastvold Auditorium

*Night of Musical Theatre and Umbrella Organization present*  
*Night of Musical Theatre: Alone Without You*  
May 12-13 @ 7:30pm; Studio Theater

## FIND US ON SOCIAL MEDIA!

@plutheatredance



## MUSICAL NUMBERS

### Act I

Changing Lives.....	Barry, Dee Dee, Ensemble
Changing Lives Mini-Reprise.....	Barry
Changing Lives Reprise.....	Barry, Dee Dee, Angie, Trent
Just Breathe.....	Emma
It's Not About Me.....	Dee Dee, Ensemble
Dance With You.....	Emma, Alyssa
The Acceptance Song.....	Trent, Dee Dee, Barry, Angie, The Godspell Cast
You Happened.....	Nick, Kevin, Emma, Alyssa, Ensemble
We Look To You.....	Mr. Hawkins
Tonight Belongs To You.....	Barry, Emma, Mrs. Greene, Kaylee Shelby, Ensemble
Act I Finale.....	Emma, Ensemble

### *10-minute intermission*

### Act II

Zazz.....	Angie, Emma
The Lady's Improving.....	Dee Dee
Love Thy Neighbor.....	Trent, The Godspell Cast, Ensemble
Alyssa Greene.....	Alyssa
Barry Is Going To Prom.....	Barry
Unruly Heart.....	Emma, Ensemble
Changing Lives Act II..	Barry, Dee Dee, Trent, Angie, Sheldon, Mr. Hawkins
It's Time To Dance.....	Alyssa, Emma, Company

**Scan this QR code to see the PLU Theatre and Dance season calendar and purchase tickets to future shows!**



## CAST

Emma Nolan.....	Presley Clark*
Alyssa Greene.....	Dorothea Koetje*
Dee Dee Allen.....	Kiana Kendall*
Barry Glickman.....	Joel Barkman*
Trent Oliver.....	Cordelia Seil*
Angie Dickinson.....	Ashley Midlo*
Mr. Hawkins.....	Cooper Perez*
Mrs. Greene.....	Samantha Katz*
Sheldon.....	Joseph Stitzel*
Nick.....	Brandon Liukkonen
Kevin.....	Gabriel Stadtmueller*
Kaylee.....	Erika Leblanc*
Shelby.....	Kyra McCloud*
Ensemble.....	Madison Ashley*
Ensemble.....	Vanessa Bassi*
Ensemble.....	Jaclyn Davis
Ensemble/Kaylee US/Shelby US.....	Kay Fitton*
Ensemble.....	Glen Fritz*
Ensemble.....	Alonna Hall*
Ensemble.....	Chelsea Hesselbach*
Ensemble.....	Taya Lovejoy*
Ensemble.....	Joaquin Makinster
Motel Clerk.....	Ashton Allen
Monster Truck Rally Announcer.....	Prince Jamerson

## CAST BIOGRAPHIES



**Ashton Allen** (Motel Clerk/Barry Glickman understudy/Trent Oliver understudy) is a fourth-year musical arts major and theatre minor from Bonney Lake, WA. His recent credits include Archer in *Sagittarius Ponderosa* (PLU), APO's 2025 One Acts Festival (PLU), and Ensemble in *When You Wish Upon a Star: a musical revue* (PLU). He would like to thank Jeff Clapp for this opportunity and his family for taking care of his cat while he is juggling rehearsals, work, and school.



**Madison Ashley** (Ensemble) is a PLUS-year musical theatre major from Redmond, OR whose recent credits include Antigone in *Antigone* (PLU), Ensemble in *The Great American Songbook: a musical revue* (PLU), and Ensemble in *Mamma Mia!* (Bend Theatre in the Park). She would like to thank her parents and best friends Sam and Z for their continued support.



**Joel Barkman** (Barry Glickman) is a PLUS-year music major from Shelton, WA whose recent credits include Ensemble in *The Great American Songbook: a musical revue* (PLU), Virgil in *Jasper in Deadland* (PLU), and Dominique Bretodeau in *Amélie* (PLU). He would like to thank the directors for this incredible opportunity, as well as his friends, family, and partner for always encouraging him to continue theatre.

## CAST BIOGRAPHIES



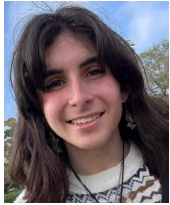
**Vanessa Bassi** (Ensemble) is a third-year transfer musical theater major from Everett, WA whose recent credits include Fiona in *Shrek the Musical*, Hermione Granger in *A Very Potter Musical*, and Ronette in *Little Shop of Horrors*. She would like to thank her mom, her siblings, and her best friends Windsor and Maggie.



**Presley Clark** (Emma Nolan) is a fourth-year musical theatre and studio art double major from Friday Harbor, WA whose recent credits include Halle in APO's 2025 One Acts Festival (PLU), Ensemble in *The Great American Songbook: a musical revue* (PLU), and Ensemble in *Off Broadway: a musical revue* (PLU). She would like to thank her family, friends, cast and crew for all of their love and support throughout this process!



**Jaclyn Davis** (Ensemble) is a PLUS-year elementary education major and theater and sociology double minor from Poulsbo, WA. Her recent credits include Smee in *Peter and The Starcatcher* (PLU), Hathaway in *Jasper in Deadland* (PLU), and Philomene in *Amélie* (PLU). She would like to thank everyone who has supported and encouraged her. She is going to miss everyone who made her PLU journey memorable.



**Kay Fitton** (Ensemble/Kaylee understudy/Shelby understudy) is a second-year musical theatre and computer science double major from Santa Barbara, CA whose recent credits include Betty Bumbake in *Peter and the Starcatcher* (PLU), Cerberus in *Jasper in Deadland* (PLU), and Witch 3 in *Macbeth* (PLU). She would like to thank their wonderful girlfriend and friends for supporting them unconditionally throughout the process of the show.



**Glen Fritz** (Ensemble) is a PLUS-year musical theatre and design/tech from Poulsbo, WA whose recent credits include Mr. Lethe in *Jasper in Deadland* (PLU) and Angus/Macbeth understudy in *Macbeth* (PLU), as well as co-lighting designing for *The Great American Songbook: a musical revue* (PLU). He would like to thank his incredible family, his amazing friends, the tireless cast and crew, and his unbelievably talented girlfriend.



**Alonna Hall** (Ensemble) is a senior musical theatre and design/tech double major. Her recent credits include Osiris in *Jasper in Deadland* (PLU), Ensemble in *NOMT: Don't Typecast Me!* (PLU), and Ensemble in *When You Wish Upon A Star: a musical revue* (PLU). She would like to thank her parents, family, and director Jeff Clapp for this opportunity.



## CAST BIOGRAPHIES



**Chelsea Hesselbach** (Ensemble) is a first-year musical theatre from Puyallup, WA whose recent credits include Virginia in *Native Gardens* (PLU), Georgia in *Curtains* (ERHS), and Benedict in *Much Ado About Nothing* (ERHS). They would like to thank Jack, Ella, Moses, their parents, and Chris Tavern for all of their encouragement.



**Prince Malakai Jamerson** (Monster Truck Rally Announcer/Mr. Hawkins understudy/Sheldon understudy) is a first-year acting/directing major with a history minor and education focus from Tacoma, WA. His roles include many characters in *Shrek the Musical*, Mr. Green in *Clue: Onstage* and Mr. Hawkins in *The Prom* all at School Tacoma School of the Arts. He would like to thank Jeff Clapp for this opportunity and his mom for her continued support!



**Samantha Katz** (Mrs. Greene) is a PLUS-year musical theatre major with a double minor in music and dance. Her credits include Maria Romanov/Ensemble in *Anastasia* (Tacoma Musical Playhouse), Ensemble in *Jasper in Deadland* (PLU), and Muderer #1 in *Macbeth* (PLU). They would like to thank the amazing cast and crew, Jeff and Ahmira, and her parents for supporting her through her final musical at PLU. Enjoy the show!



**Kiana Kendall** (Dee Dee Allen) is a third-year musical theatre major from Sultan, WA, whose recent credits include Ensemble in *The Great American Songbook: a musical revue* (PLU) and Ammut in *Jasper in Deadland* (PLU). She extends heartfelt thanks to her directors and cast mates for their time, effort, and collaboration, and to her family—especially her parents, Janos and Quamy, her sister, Vanessa, and Zach—for their unwavering support throughout her creative and academic journey at PLU.



**Dorothea Koetje** (Alyssa Greene) is a senior musical theatre major and Hispanic studies minor from Edmonds, WA. Her recent credits include Ensemble in *Jasper in Deadland* (PLU), Ensemble/Amélie understudy in *Amélie* (PLU), and Lilith in *She Kills Monsters* (PLU). She would like to thank her parents, sister, Glen, and Alonna for their unconditional support and the entire cast and crew for making this show possible.



**Erika Leblanc** (Kaylee) is a third-year musical theatre and political science double major from British Columbia, Canada whose recent credits include Muse/Thetis in *Xanadu* (Tacoma Musical Playhouse), Ensemble in *Anastasia* (Tacoma Musical Playhouse), and Torrey in *Freaky Friday the Musical* (Northwest Theatre Lab). She would like to thank her friends and family for always supporting her. Enjoy the show!

## CAST BIOGRAPHIES



**Brandon Liukkonen** (Nick) is a senior music education major. This is his acting debut, but you may have seen him playing second trumpet in the pit for *The Prom* and *Sister Act* at Tacoma Musical Playhouse. He would like to thank his parents and family for always supporting him in everything he does.



**Taya Lovejoy** (Ensemble) is a PLUS-year acting/directing major with minors in dance and Hispanic studies from Walla Walla, WA. Her recent credits include Ensemble in *Jasper in Deadland* (PLU) and Frances in *Melancholy Play* (PLU), as well as choreographing *The Great American Songbook: a musical revue* (PLU). She'd like to thank the directors for this opportunity, her loved ones for their constant support, and the cast for being such wonderful people to work with on one of her last PLU shows!



**Joaquin Makinster** (Ensemble) is a sophomore music education major, and he's just happy to be here! Previous credits include Ensemble in *The Great American Songbook: a musical revue* (PLU), and Lord Pinkleton in *Cinderella* (Manestage Theater Company), and Charlie Brown in *You're a Good Man Charlie Brown!* (Bethel High School). He'd like to thank his friends and family for their constant support!



**Miranda Manning** (Emma Nolan understudy/Alyssa Greene understudy) is a junior musical theatre from Tacoma, WA. Her recent credits include Ensemble in *Native Gardens* (PLU) and Sandy in *Grease* (Stadium High School). She would like to thank her family for supporting her dreams, and the community of friends she has made at PLU. She also would like to thank director Jeff Clapp for the wonderful opportunity to take part in this show.



**Kyra McCloud** (Shelby) is a junior musical theatre major from Gresham, OR whose recent credits include Ensemble in *The Great American Songbook: a musical revue* (PLU), Persephone in *Jasper in Deadland* (PLU), and Gina in *Amélie* (PLU). She would like to thank her friends, her family, her amazing dog Opal, and the cast and crew of this production.



**Ashley Midlo** (Angie Dickinson) is a second-year musical theatre and business double major. Her recent credits include Ensemble in *The Great American Songbook: a musical revue* (PLU), Hawking Clam in *Peter and the Starcatcher* (PLU), and Katherine Plumber in *Newsies* (Sitka Fine Arts). She would like to thank her mom, dad, and partner for all their support and love.



## CAST BIOGRAPHIES



**Cooper Perez** (Mr. Hawkins) is a third-year theatre and history double major from Maple Valley, WA. His recent credits include Ensemble/Mr. Lethe understudy in *Jasper in Deadland* (PLU), Ensemble in *Amélie* (PLU), as well as multiple appearances within the PLU opera program. He thanks PLU for performing opportunities and those around him for their support.



**Cordelia Seil** (Trent Oliver) is a second-year musical theatre and design/tech double major from Kent, WA whose recent credits include Mack in *Peter and the Starcatcher* (PLU), Loki/Jasper understudy in *Jasper in Deadland* (PLU), and Floyd in *Safe Hands* (Seattle Public Theater). They would like to thank their amazing friends and family for always supporting them, our inspiring directing team, and the fabulous company of The Prom for their support and energy!



**Gabriel Stadtmueller** (Kevin) is a second-year engineering major, math minor whose recent credits include Prentiss in *Peter and the Starcatcher* (PLU), Jasper in *Jasper in Deadland* (PLU), and Ensemble in *Off Broadway: a musical revue* (PLU). He would like to thank his friends, family, and amazing girlfriend for their continuous support and love.



**Joseph Stitzel** (Sheldon) is a senior musical theatre major from Shelton, WA whose recent credits include Boatswain in *HMS Pinafore* (PLU Opera) and Ensemble in *Jasper in Deadland* (PLU). He would like to thank Steven Wells for his continued support and the staff of PLU Theatre, Music and Dance for fostering his success as an artist.

## PRODUCTION BIOGRAPHIES

**Kathleen Anderson** (Costume Designer/Costume Shop Manager) has an MFA in Costume and Set Design from Northwestern University. Her favorite designs for PLU Theatre include costume and set designs for *Twelfth Night* and *The Spitfire Grill*, costume design for *Cabaret*, *A Dream Play*, and *The Fantasticks*, and puppet and costume design for *The Floating World*. She has also designed extensively for Tacoma Opera and Harlequin Productions in Olympia.

**Marley Bjornstad** (Assistant Stage Manager) is a senior design/tech major from St. Paul, MN whose recent credits include assistant stage manager for *Antigone*, *Melancholy Play* and *Macbeth*, all at PLU. He would like to thank Emma for being an epic stage manager and director Jeff Clapp for the opportunity.

**Amy E. Boers** (Music Director/Pit Conductor) is one of the region's most sought-after collaborative artists. As such she is well known as a pianist, coach, teacher, and music director. Amy's work as conductor, director, and pianist ranges from musical theater, church, ACDA regional honor choirs, to choral organizations throughout the Puget Sound. She is currently serving as collaborative pianist with numerous local ensembles, Director of Music at Mountain View Lutheran Church, Edgewood, staff pianist at Pacific Lutheran University, and accompanist with Symphony Tacoma Chorus. Most recently, Amy has been named resident Music Director in the School of Music, Theatre and Dance at PLU, where she has been involved in numerous productions including *Amélie*, *Off Broadway: a musical revue*, *Jasper In Deadland*, and *The Great American Songbook: a musical revue*. She loves working with the amazing students and colleagues!

## PRODUCTION BIOGRAPHIES

**Jeffrey Clapp** (Director) is an Associate Professor of Theatre and Dance at Pacific Lutheran University whose recent directing credits include *Songs I'll Never Sing: a musical revue*, *Master Harold...and the boys*, *Medea*, *Godspell*, and *Amadeus*. Jeff has also served as Technical Director and Stage Director for Tacoma Opera. Some of the production work Jeff is most proud of while at Tacoma Opera include *Madame Butterfly*, *Tosca*, *Fallstaff*, *Barber of Seville*, and *An Evening with Kurt Weill*. Jeff has served as a faculty member at PLU since 1995. While not working in theatre, Jeff enjoys exploring and fly fishing northwest rivers with his wife and son.

**Bailey DeLozier** (Assistant Lighting Designer) is a second-year design/technical Major from Yakima, WA whose recent credits include Lighting Designer for *Antigone* (PLU), Lighting Designer for APO's 2024 One Acts Festival (PLU), and Assistant Lighting Designer for *NOMT: Don't Typecast Me!* (PLU). She would like to thank her family and partner for their unwavering support.

**Ahmira Elyard-Jaeger** (Director) is a junior elementary education major with minors in theatre and writing from Husum, WA. Her recent directing credits include *In Loving Memory* with the APO Psi Show (PLU) and *Kintsugi: A Play in Five Stages* (Trout Lake High School). She would like to thank Jeff for giving her this opportunity and, additionally, for giving her a giggle.

**Jessica Heinauer** (Assistant Music Director) is a PLUS-year kinesiology and music double major from Forest Grove, OR. Her recent credits include Chorus Master for *Amahl and the Night Visitors* (PLU Opera), and Cousin Hebe in *HMS Pinafore* (PLU Opera). She would like to thank Amy Boers for this opportunity!

**Addy Keller** (Assistant Stage Manager) is a junior design/tech major and dance and studio arts double minor from Sammamish, WA. Her recent credits include and was the Assistant Lighting Designer for *In Excelsis Deo: a PLU Christmas* (PLU) and *The Great American Songbook: a musical revue* (PLU) and Stage Manager for *Macbeth* (PLU). She would like to thank everyone for their hard work on this production.

**Richard MacKenzie** (Scenic Designer) has worked in theatre and education since high school. After receiving a BFA in performance production at Cornish College of the Arts, he became the Technical Director/Designer for its theater department, producing a multitude of shows. In 2016, he departed for Eastside Preparatory School, where he teaches stagecraft to middle and high school students, in addition to overseeing productions and events on campus. Rick is passionate about creating a visual world from the written word, saying "it's even more fulfilling when achieving a vision with a team. Your imagination goes where you never expect, and the end product is better than anybody ever imagined." Rick and his wife Bryn love their two cats and working together on their new West Seattle home.

## PRODUCTION BIOGRAPHIES

**Soraya Martinez** (Choreographer) is a second-year business major whose recent credits include Captain/Choreographer of the PLU Dance Team, Choreographer for *Charlie and the Chocolate Factory*, and Choreographer for *Anything Goes*. She would like to thank Sarah Seder for this opportunity and Jen Devereaux for starting her musical theatre choreography journey.

**Keenan Minogue** (Technical Director) as Resident Assistant Professor of Theatre, Keenan has broad expertise in all aspects of live production, and has been afforded the opportunity to practice his craft across the nation, with projects numbering in the hundreds. Previously, he designed props for the world premiere of Theresa Rebeck's *Downstairs*, built and painted sets for the many theaters of Chicago, and collaborated on projects within the live events industry at large. Keenan Received his BFA from the University of Wisconsin-Whitewater, and MFA in Theatrical Design and Production Technology from the University of Memphis.

**Emma Peters** (Stage Manager) is a senior English major from Honolulu, HI whose recent credits include stage managing APO's 2025 One Acts Festival (PLU), the Dance Team Winter Showcase (PLU), and *Jasper in Deadland* (PLU). She would like to thank Jeff, Ahmira, the incredible production team, cast, and crew for their work on making this show special. Look Mom, I made it!

**Sarah Seder** (Choreographer) is the Resident Assistant Professor of Dance at PLU. Previously, she taught at Smith College (MA), and Mount Holyoke College (MA). She has choreographed numerous musicals for Taproot Theatre and Village Theatre youth camps. She performed in the role of Aunt Eller in the original production of Daniel Fish's *Oklahoma!* at Bard College that later went on to win a Tony Award for Best Revival of a Musical. Seder earned her BA in Dance and Psychology from Bard College and her MFA in Dance from Smith College.

**Jacob Viramontes** (Lighting Designer) graduated from PLU in 2017 with a BFA in Acting & Directing and a minor in technical theatre and design. He now lives in Seattle and works mostly as a freelance lighting designer. Recent lighting design credits include *Danceblast 2025* and *Sister Act* (Curtis High School), *I Love You, You're Perfect, Now Change* (Renton Civic Theatre), *Miss Holmes* (Centerstage Theatre), *The Curious Incident of the Dog in the Nighttime* and *The Mousetrap* (Tacoma Little Theatre), *GOLD* (Annex Theatre), *Love's Labor's Lost* (Seattle Shakespeare Company), *The Great American Songbook: a musical revue* (PLU), *The Hatmaker's Wife* (Drama Dock), *Damn Yankees* (Reboot Theatre Company), *Come On Get Tappy!* (Outrage Onstage/SecondStory Repertory), *53% Of* (Sound Theatre Company), *Red* (Burien Actors Theatre), and *14/48 Seattle Weekend Two - Spring 2024* (The 14/48 Projects). "Always a pleasure to be back making theatre with my fellow Lutes!"

## DIRECTOR'S NOTES

Vibrant, campy, and endearing, *The Prom* contains many elements that audiences might expect from a feel-good, zany musical. However, the challenges faced by young protagonist Emma are neither fictitious nor distant. *The Prom* is inspired by the experience of Mississippi high school student Constance McMillen. In 2010, McMillen was banned from attending senior prom because she planned to wear a tux and bring her girlfriend as her date. Though McMillen's story gained national visibility, her experience is only one of many.

In the decade and a half since McMillen's senior year, our country seemed to be, albeit slowly, becoming hospitable for members of the LGBTQIA community. Yet mere months ago, Title IX protections for LGBTQIA students were revoked. This and other recent attempts to undermine legal protections for LGBTQIA individuals demonstrate that the story of *The Prom* is more relevant than ever. In our contentious political landscape, *The Prom* reminds us of the real-world implications of policy and the consequences of the systemic rejection of people deemed "different."

We are all called to live our authentic, undivided truth. *The Prom* insists, and rightly so, that the best self is the whole self. Our tremendously hard-working, cast, crew, and production team offer you this: a stubbornly joyful (and unapologetically queer) love story. May tonight's show bring you laughter, hope, and a renewed sense of empathy.

***-- Ahmira Elyard-Jaeger '26, director***

I would just like to say thank you to all the wonderful people who have given their all for this production. You have given me something I have had in short supply...

Hope.

I am immensely grateful.

***-- Jeff Clapp, director***