



PIU | PACIFIC
LUTHERAN
UNIVERSITY

PIU | COLLEGE OF
PROFESSIONAL STUDIES

**2024-25 SEASON
ARTS & LECTURE EVENTS**



Dear Friends,

Welcome to the College of Professional Studies 2024-25 season at Pacific Lutheran University! This year we present an incredible array of performances, exhibits, and lectures featuring our talented students, faculty, and guests.

The College of Professional Studies is a dynamic and inclusive community of educators, artists, learners, and professionals dedicated to educating and empowering students to connect their talent and passion to their vocation and service. The College prepares life-long learners to positively impact our community as caring, collaborative, and ethical leaders. We seek new and innovative collaborations across disciplines, to foster partnerships within our community and region, and to engage in meaningful vocational connections on a national and global level.

This calendar represents thousands of hours of student training, practice, and rehearsals under the expert guidance of our incredible faculty. We boast some of the region's most outstanding performing arts venues — Lagerquist Concert Hall and the Karen Hille Phillips Center for the Performing Arts — that provide exemplary environments for learning and creativity. Our performances, exhibits, and lectures are some of the finest you'll see and hear anywhere — at a fraction of the ticket prices you'd pay elsewhere, including many that are free.

I express my heartfelt appreciation to our many friends that support our public events, as well as our College of Professional Studies programs, facilities, and student scholarships. I encourage you to join me in supporting the College of Professional Studies and our respective disciplines. Every donation makes an incredible difference to our students and the impact on our community is substantial.

Please visit us at plu.edu/arts-events for the most up-to-date listing of our events (schedules can change) and to purchase tickets. Please keep connected with us through our various social media sources or directly with me at cbennett@plu.edu. I look forward to seeing you at our events this season!

Warmest Regards,

Cameron Bennett, Dean
College of Professional Studies

Support PRST

The reasons for making a gift to the College of Professional Studies (PRST) are personal and varied. Every donation makes an incredible difference — whether you are grateful for your PLU experience and want to give back, wish to leave a legacy to benefit future Lutes, feel passionate about supporting an important cause or influential faculty mentor, or simply want to take advantage of donor tax benefits. Our gratitude for your contribution is heartfelt and sincere.

Donate online

givecampus.com/campaigns/7789/donations/new

Donate by phone

Please call PLU's Office of Advancement at 253-535-7177
Regular business hours are 8 am - 5 pm, Monday - Friday

Donate by mail

Send your check, payable to Pacific Lutheran University
(noting the College of Professional Studies on the memo/for line) to:

Pacific Lutheran University
Office of Advancement and University Relations
Tacoma, WA 98447-0018

Connect

For the most current 2024-25 season information, visit plu.edu/arts-events



facebook.com/plu.arts



instagram.com/plu_arts



twitter.com/plu_arts



youtube.com/@PLUARTS



Tickets

Tickets to PLU Arts events can be purchased online at Eventbrite or at the door.

For further ticketing information and online purchasing options, visit plu.edu/arts-events

MUSIC, THEATRE & DANCE

\$16 General public

\$12 PLU Faculty & Staff, Alumni, Military, Seniors 60+

\$8 Immediate family of performers and patrons under 18

Free for PLU students with ID

Theatre Student Series: \$5 General admission

ART & DESIGN

University Gallery:

FREE. Open 8 am - 4 pm, Monday - Friday, or by appointment

EDUCATION

The 2025 Benson Lecture is free and open to all thanks to the generosity of the Benson Family Foundation

1. INGRAM HALL (ING)

College of Professional Studies, Office of the Dean
University Gallery (UG)

2. MARY BAKER RUSSELL MUSIC CENTER (MBR)

Amphitheater (AMPH)
Jennie Lee Hansen Recital Hall, 306 (JLH)
Lagerquist Concert Hall (LCH)

3. KAREN HILLE PHILLIPS CENTER FOR THE PERFORMING ARTS (KHP)

Eastvold Auditorium (EA)
Studio Theater (ST)

4. ANDERSON UNIVERSITY CENTER (AUC)

The Cave University Gallery Annex

Where To Find Us



University GALLERY



September

- 8 FACULTY RECITAL: **ERIK STEIGHNER, SAXOPHONE** LCH
Sun at 3 pm
- 14 FACULTY RECITAL: **DAWN SONNTAG, COMPOSER** LCH
Sat at 7:30 pm
- 18 GALLERY EXHIBITION: **WINDOWS ON THE WORLD:
OBJECTS FROM PLU'S COLLECTIONS** UG
Sept 18 - Oct 16
Opening Reception: Wed, Sept 18, 5-7 pm
Drawing from all across campus, this exhibition spotlights a range of remarkable historical objects, artworks, and scientific specimens. Come explore the amazing diversity of PLU's collections! Organized by the University Collections Board.
- 15 **HIGH SCHOOL WOODWIND WORKSHOP** MBR
Sun
- 15 **HIGH SCHOOL WOODWIND WORKSHOP SHOWCASE** MBR
Sun at 5 pm
- 29 RICHARD D. MOE ORGAN RECITAL SERIES: **JUSTIN MURPHY-MANCINI, ORGANIST** LCH
Sun at 3 pm

SUNDAY	MONDAY	TUESDAY	WEDNESDAY	THURSDAY	FRIDAY	SATURDAY
1 SEPTEMBER	2 LABOR DAY	3	4	5	6	7
8 Faculty Recital: Erik Steighner, Saxophone	9	10	11	12	13	14 Faculty Recital: Dawn Sonntag, Composer
15 High School Woodwind Workshop <i>Showcase: 5 pm</i>	16	17	18 Windows on the World: Objects from PLU's Collections <i>Sept 18 - Oct 16</i> Opening Reception: 5 - 7 pm	19	20	21
22	23	24	25	26	27	28
29 Richard D. Moe Organ Series: Justin Murphy- Mancini, Organist	30	1 OCTOBER	2	3	4	5

FACULTY SPOTLIGHT
JUSTIN MURPHY-MANCINI

Paul Fritts Endowed Chair in Organ Studies and Performance, Assistant Professor of Music

The inaugural Paul Fritts Endowed Chair in Organ Studies and Performance Justin Murphy-Mancini is a keyboardist, composer, and liturgical musician. He specializes in the performance of music from the Middle Ages, Renaissance, and Baroque at the organ and harpsichord, as well as the work of living composers. As a chamber musician, Murphy-Mancini has concertized around the United States and Europe. He joined the PLU community in 2024, with the goal of encouraging students to explore organ music.



- MUSIC
- ART & DESIGN
- THEATRE & DANCE
- EDUCATION



Jasper in Deadland, 2024

October

- 1 GALLERY EXHIBITION: **WINDOWS ON THE WORLD: OBJECTS FROM PLU'S COLLECTIONS** UG
Ongoing through Oct 16
- 4 SPOTLIGHT SERIES: **THE GREAT AMERICAN SONG BOOK: A MUSICAL REVUE** EA
Fri, Oct 4 at 7:30 pm & Sat, Oct 5 at 5:30 pm
Tom Smith & Parker Brown, Directors
Amy Boers, Musical Director
Taya Lovejoy ('25), Choreographer
An evening of influential American popular songs and jazz standards from the 1920s to the 1960s that were created for Broadway and Hollywood, performed by PLU's brightest talents!
- 9 **UNIVERSITY JAZZ ENSEMBLE** EA
Wed at 7:30 pm
- 13 **UNIVERSITY WIND ENSEMBLE** LCH
Sun at 3 pm
- 15 **CHORAL CONCERT** LCH
Tues, Oct 15 & Wed, Oct 16 at 7:30 pm
- 19 **HIGH SCHOOL BRASS WORKSHOP** MBR
Sat
- 19 **PLU FACULTY BRASS SHOWCASE** LCH
Sat at 5 pm
- 22 **UNIVERSITY SYMPHONY ORCHESTRA** LCH
Tues at 7:30 pm
- 25 **ORCHESTRA FESTIVAL** LCH
Fri
- 26 FACULTY RECITAL: **OKSANA EJOKINA, PIANO WITH GUEST ARTISTS** LCH
Sat at 7:30 pm
- 27 **SOUTH SOUND SAXOPHONE ENSEMBLE** LCH
Sun at 3 pm
- 30 PLU CHRISTMAS CONCERT: **IN EXCELSIS DEO TICKETS ON SALE**
Wed at 10 am
Performances: December 6-9

SUNDAY	MONDAY	TUESDAY	WEDNESDAY	THURSDAY	FRIDAY	SATURDAY
29 SEPTEMBER Windows on the World: Objects from PLU's Collections <i>Ongoing through October 16</i>	30	1 OCTOBER	2 ROSH HASHANAH BEGINS	3	4 The Great American Song Book	5
6	7	8	9 University Jazz Ensemble	10	11 YOM KIPPUR BEGINS	12
13 University Wind Ensemble	14 INDIGENOUS PEOPLES' DAY	15 Choral Concert	16	17	18	19 High School Brass Workshop PLU Faculty Brass Showcase
20	21	22 University Symphony Orchestra	23	24	25 Orchestra Festival	26 Faculty Recital: Oksana Ejokina, Piano with Guest Artists
27 South Sound Saxophone Ensemble	28	29	30 Christmas Concert Tickets on Sale	31	1	2

FACULTY SPOTLIGHT
ASIEH MAHYAR

*Director of Orchestral Studies,
Visiting Instructor of Music*

Passionate about performing music from different cultures, Asieh Mahyar is the Director of Orchestral Studies and conductor for the PLU Symphony Orchestra.

Coming from Iran and being one of the very few female conductors from her country, Mahyar has broad experience working with ensembles in many countries. Ms. Mahyar has been selected to participate in prestigious conducting workshops and conferences including the Cabrillo Music Festival, National Music Festival, Eastern Music Festival, Conducting Institute Conductors Retreat at Medomak, and Choral Conducting Workshop.



- MUSIC
- ART & DESIGN
- THEATRE & DANCE
- EDUCATION






November

- 3 **ANGELA MEADE VOCAL COMPETITION** LCH
Sun at 3 pm
- 6 **JURIED STUDENT EXHIBITION** UG
Nov 6 - Dec 4
Opening Reception: Wed, Nov 6, 5-7 pm
The Juried Student Exhibition features exceptional work by PLU's student artists chosen by a guest juror.
- 6 **KEYBOARD STUDENTS RECITAL** LCH
Wed at 7:30 pm
- 7 **SPOTLIGHT SERIES: NATIVE GARDENS** ST
By Karen Zacarías
Thurs, Nov 7 - Sat, Nov 9 at 7:30 pm & Sun, Nov 10 at 2 pm
Jeanette Sanchez-Izenman, Guest Director
Pablo, a high-powered lawyer, and doctoral candidate Tania, his very pregnant wife, are realizing the American dream when they purchase a house next door to community stalwarts Virginia and Frank. But a disagreement over a long-standing fence line soon spirals into an all-out war of taste, class, privilege, and entitlement.
- 10 **FACULTY RECITAL: KORINE FUJIWARA, VIOLA AND FAMILY** LCH
Sun at 7:30 pm
- 15 **FEATURED STUDENT SERIES: DANCE TEAM WINTER SHOWCASE** EA
Fri, Nov 15 - Sat, Nov 16 at 7:30 pm
- 16 **WOODWIND STUDENTS RECITAL** LCH
Sat at 3 pm
- 16 **BRASS STUDENTS RECITAL** LCH
Sat at 4:30 pm
- 17 **UNIVERSITY WIND ENSEMBLE** LCH
Sun at 3 pm
- 19 **UNIVERSITY CONCERT BAND** LCH
Tues at 7:30 pm
- 20 **PIANO ENSEMBLE** LCH
Wed at 7:30 pm

SUNDAY	MONDAY	TUESDAY	WEDNESDAY	THURSDAY	FRIDAY	SATURDAY
27 OCTOBER	28	29	30	31	1 NOVEMBER DIWALI	2
3	4	5	6	7		9
Angela Meade Vocal Competition			Juried Student Exhibition Nov 6 - Dec 4 Opening Reception: 5 - 7 pm	Native Gardens by Karen Zacarias		
			Keyboard Students Recital			
10	11	12	13	14	15	16
Faculty Recital: Korine Fujiwara, Viola and Family	VETERANS DAY				Dance Team Winter Showcase	
					Woodwind Students Recital	
					Brass Students Recital	
17	18	19	20	21	22	23
University Wind Ensemble		University Concert Band	Piano Ensemble	Steel Band	University Jazz Ensemble	Sølvvinden Flute Ensemble
						Percussion Ensemble
24	25	26	27	28	29	30
Guest Artist Recital: April Clayton, Flute & Miguel del Aguila		Chamber Music Kaleidoscope		THANKSGIVING DAY		
April Clayton Flute Masterclass		String Kaleidoscope				
Choral Union						
Guitar Orchestra & Guitar Ensemble						

- 21 **STEEL BAND** EA
Tues at 7:30 pm
- 22 **UNIVERSITY JAZZ ENSEMBLE** EA
Fri at 7:30 pm
- 23 **SØLVVINDEN FLUTE ENSEMBLE** LCH
Sat at 3 pm
- 23 **PERCUSSION ENSEMBLE** LCH
Sat at 7:30 pm
- 24 **GUITAR ORCHESTRA & GUITAR ENSEMBLE** LCH
Sun at 7:30 pm
- 24 GUEST ARTIST RECITAL: LCH
APRIL CLAYTON, FLUTE & MIGUEL DEL AGUILA, COMPOSER AND PIANO
Sun at 12 pm
- 24 **APRIL CLAYTON FLUTE** MBR 322
MASTERCLASS AND BURKHART FLUTES EXHIBIT
Sun at 2:30 pm
- 24 **CHORAL UNION** LCH
Sun at 3 pm
- 26 **CHAMBER MUSIC KALEIDOSCOPE** LCH
Tues at 6 pm
- 26 **STRING KALEIDOSCOPE** LCH
Tues at 7:30 pm

 MUSIC	 ART & DESIGN
 THEATRE & DANCE	 EDUCATION



December

- 1 **JURIED STUDENT EXHIBITION** **UG**
Ongoing through Dec 4
- 3 **SAXOPHONE QUARTETS & JAZZ COMBOS** **AUC**
Tues at 6 pm in the Cave
- 4 **SOUNDS OF CHRISTMAS** **LCH**
Wed at 7:30 pm
- 5 **FEATURED STUDENT SERIES: ANTIGONE** **ST**
Thurs, Dec 5 - Sat, Dec 7 at 7:30 pm

Presented by Alpha Psi Omega
Translated by Ian Johnston from Sophocles
Zivia Rich, Director

Some stories resonate through the millennia to connect with us still in the modern day. In Sophocles' *Antigone*, one woman's rage against the laws of Thebes turns the royal court on its head.
- 6 **A PLU CHRISTMAS CONCERT IN EXCELSIS DEO** **LCH**

Fri, Dec 6 at 7:30 pm in Lagerquist Concert Hall
Sat, Dec 7 at 2 pm & 7:30 pm in Lagerquist Concert Hall

Sun, Dec 8 at 2 pm in Lagerquist Concert Hall
Mon, Dec 9 at 7:30 pm at Benaroya Hall

Join us for our beloved series of PLU Christmas Concerts as the Choir of the West, University Chorale, and University Symphony Orchestra present "In excelsis Deo", featuring John Rutter's exhilarating setting of *Gloria*. Other works by Sergei Rachmainoff, David Willcocks, and Brian Galante mix with traditional carols and other seasonal favorites as we celebrate beauty and joy in this Christmas season.

SUNDAY	MONDAY	TUESDAY	WEDNESDAY	THURSDAY	FRIDAY	SATURDAY
1 DECEMBER	2	3	4	5	6	7
Juried Student Exhibition <i>Ongoing through Dec 4</i>		Saxophone Quartets & Jazz Combos	Sounds of Christmas	Alpha Psi Omega presents <i>Antigone</i>		
					A PLU Christmas Concert: <i>In excelsis Deo</i>	A PLU Christmas Concert: <i>In excelsis Deo</i>
8	9	10	11	12	13	14
A PLU Christmas Concert: <i>In excelsis Deo</i>	A PLU Christmas Concert: <i>In excelsis Deo</i> , at Benaroya Hall					
15	16	17	18	19	20	21
22	23	24 CHRISTMAS EVE	25 CHRISTMAS DAY HANUKKAH BEGINS	26 KWANZAA BEGINS	27	28
29	30	31 NEW YEAR'S EVE	1 JANUARY NEW YEAR'S DAY	2	3	4

FACULTY SPOTLIGHT
RAUL DOMINGUEZ

*Associate Director of Choral Studies,
Assistant Professor of Music*

Raul Dominguez leads the University Chorale, University Singers, and teaches courses in Secondary Methods and the Conducting sequence. He is the Associate Conductor for Choral Union, PLU's community ensemble.

His research focus is the choral music of the United Mexican States and seeks to provide choral directors the necessary means to create artful performances of this repertoire. While living in Denver, Raul led Timberline, the elementary segment of Denver Children's Choir alongside fabulous musicians, Festival Chorus at University of Colorado Boulder, and was the Associate Artistic Director of the Denver Gay Men's Chorus.



- MUSIC
- ART & DESIGN
- THEATRE & DANCE
- EDUCATION



January

- 11 **NORTHWEST HIGH SCHOOL HONOR BAND** LCH
Concerts: Sat at 4:30 & 6:30 pm
- 19 **PLU HONOR ORCHESTRA FOR STRINGS** LCH
Concert: Sun at 5 pm
- 31 **GREAT MOMENTS IN OPERA** EA
Fri, Jan 31 - Sat, Feb 1 at 7:30 pm
Barry Johnson, Director

Join the talented students of PLU Opera for a program of favorite scenes from some of the greatest operas ever written.

FACULTY SPOTLIGHT RON GERHARDSTEIN

*Director of Bands,
Associate Professor of Music*

Dr. Gerhardstein has enjoyed a long career as a music educator in public school and collegiate settings. In 2024, he became the Director of Bands. He currently directs the Wind Ensemble and he teaches coursework in the music education curriculum. A passionate advocate for music education, Ron is an active member of Washington Music Educators Association, currently serving a two-year term as it's President. He also serves on the Washington Interscholastic Activities Association (WIAA) as the honorary board member for the Fine Arts.



SUNDAY	MONDAY	TUESDAY	WEDNESDAY	THURSDAY	FRIDAY	SATURDAY
29 DECEMBER	30	31	1 JANUARY NEW YEAR'S DAY	2	3	4
5	6	7	8	9	10	11 Northwest High School Honor Band
12	13	14	15	16	17	18
19 PLU Honor Orchestra for Strings	20 MARTIN LUTHER KING JR. DAY	21	22	23	24	25
26	27	28	29 LUNAR NEW YEAR	30	31 Great Moments in Opera	1 FEBRUARY

SENIOR SPOTLIGHT DEAN'S AWARDS FOR EXCELLENCE 2024 RECIPIENTS

Felicity Ankrom '24

Elementary Education

Caroline Bergren '24

Music Education & Music Performance

Isabella Daltoso '24

Music Performance

Jessa Delos Reyes '24

Music Education

Hanne Laure'l Ferguson '24

Theatre - Acting/Directing & Design/Tech

Luke Harvey '24

Studio Arts & Art History

Cecelia Lerner '24

Elementary Education

Juliana Rodriguez '24

Dance & Innovation Studies

Brian Sung '24

Business Administration

Karen Zamora-Chavez '24

Studio Arts



- MUSIC
- ART & DESIGN
- THEATRE & DANCE
- EDUCATION

ONLINE CALENDAR AT PLU.EDU/ARTS-EVENTS

February

- 1 **GREAT MOMENTS IN OPERA** EA
Fri, Jan 31 - Sat, Feb 1 at 7:30 pm

Barry Johnson, Director

Join the talented students of PLU Opera for a program of favorite scenes from some of the greatest operas ever written.

- 9 **RICHARD D. MOE ORGAN RECITAL SERIES** LCH
Sun at 3 pm

- 19 **GALLERY EXHIBITION: PHOTOGRAPHY SHOWCASE** UG
Feb 19 - Mar 19

Opening Reception: Wed, Feb 19, 5-7 pm

In collaboration with Tacoma Photo Center, this show highlights local artists working in a range of

FACULTY SPOTLIGHT NANA JACKSON

*Assistant Professor of Business,
Management (Organizations/Behavior)*

PLU Alumna Nana Jackson served in the US Army at Madigan Army Medical Center, and spent many years in HR, applying her extensive background to enhance organizational dynamics and leadership. She holds a PhD in Business Administration with a specialization in Organizational Leadership, as well as a Master's in human resources and an MBA from Pacific Lutheran University.



SUNDAY	MONDAY	TUESDAY	WEDNESDAY	THURSDAY	FRIDAY	SATURDAY
26 JANUARY	27	28	29	30	31 Great Moments in Opera	1 FEBRUARY
2	3	4	5	6	7	8
9 Richard D. Moe Organ Series	10	11	12	13	14	15
16	17 PRESIDENTS' DAY	18	19 Photography Showcase Feb 19 - Mar 19 Opening Reception: 5 - 7 pm	20	21	22
23	24	25	26	27	28 RAMADAN BEGINS	1 MARCH

EDUCATION SPOTLIGHT
ALLISON DRAGO

Executive Director of Education Leadership Programs

Allison Drago is an accomplished educator with over 20 years of experience in P-12 public schools, serving in roles ranging from teacher and school principal to central office leader. She holds a doctorate in educational leadership, enhancing her deep understanding of educational systems and school leadership.

At PLU, Allison leverages her expertise to mentor and support aspiring school leaders, and she designs innovative teacher and educational leadership programs for in-service practitioners. With her dedication and contributions, Allison continues to make a significant impact in education as she embarks on her 5th year at PLU.



- MUSIC
- ART & DESIGN
- THEATRE & DANCE
- EDUCATION



March

- 1 GALLERY EXHIBITION: **PHOTOGRAPHY SHOWCASE** UG
Ongoing through Mar 19
- 1 **GUITAR FESTIVAL** LCH
Concerts: Sat at 2 & 5 pm
- 1 **GUITAR ORCHESTRA AND GUITAR ENSEMBLE** LCH
Sat at 2 pm
- 1 **GUITAR FACULTY RECITAL** LCH
Sat at 5 pm
- 3 **CHORAL INVITATIONAL** LCH
Mon, Mar 3 - Tues, Mar 4
- 7 **BAND INVITATIONAL** LCH
Fri, Mar 7 - Sat, Mar 8
- 9 **CHORAL UNION** LCH
Sun at 3 pm
- 14 SPOTLIGHT SERIES: **THE PROM THE MUSICAL** EA
Thurs, Mar 14 - Sat, Mar 15 at 7:30 pm &
Sun, Mar 16 at 2 pm

Music by Matthew Sklar, lyrics by Chad Beguelin,
Book by Bob Martin & Chad Beguelin
Jeff Clapp, Director
Amy Boers, Music Director
Sarah Seder, Choreographer

Four eccentric Broadway stars are in desperate need of a new stage. So when they hear that trouble is brewing around a small-town prom, they know that it's time to put a spotlight on the issue... and themselves. The town's parents want to keep the high school dance on the straight and narrow—but when one student just wants to bring her girlfriend to prom, the entire town has a date with destiny. On a mission to transform lives, Broadway's brassiest join forces with a courageous girl and the town's citizens and the result is love that brings them all together.
- 16 **UNIVERSITY WIND ENSEMBLE** LCH
Sun at 3 pm
- 18 **PLU WEATHERMON JAZZ FESTIVAL** KHP/AUC
Tues

Eric Marienthal performs with the PLU Jazz Band during the Weathermon Jazz Festival, 2024

SUNDAY	MONDAY	TUESDAY	WEDNESDAY	THURSDAY	FRIDAY	SATURDAY
23 FEBRUARY Photography Showcase Ongoing through Mar 19	24	25	26	27	28	1 MARCH Guitar Festival Guitar Orchestra & Guitar Ensemble Guitar Faculty Recital
2	3 Choral Invitational	4	5	6	7 Band Invitational	8
9 Choral Union	10	11	12	13	14 HOLI The Prom the musical	15
16 The Prom University Wind Ensemble	17	18 PLU Weathermon Jazz Festival Wayne Bergeron, Trumpet with the University Jazz Ensemble	19 University Symphony Orchestra: Student Showcase	20	21	22 Rhythm Celebration
23	24	25	26	27	28	29 EID AL-FITR
30	31					

- 18 **WAYNE BERGERON, TRUMPET WITH THE PACIFIC LUTHERAN UNIVERSITY JAZZ ENSEMBLE** EA
Tues at 7:30 pm
- 19 **UNIVERSITY SYMPHONY ORCHESTRA: STUDENT SHOWCASE** LCH
Wed at 7:30 pm
- 22 **RHYTHM CELEBRATION** KHP
Sat, 9 am-3 pm (KHP)
Concert at 1 pm (EA)

FACULTY SPOTLIGHT
BROOKE PHIPPS

Assistant Professor of Communication, Film & Media Studies

Dr. E. Brooke Phipps is originally from central Pennsylvania. Her scholarship engages rhetorical perspectives on digital media, networks, platforms, and activism. As an educator, Dr. Phipps desires to cultivate enthusiasm in their students for the incredibly diverse field of rhetorical theory by applying rhetorical frameworks to their daily lived experiences.



- MUSIC
- ART & DESIGN
- THEATRE & DANCE
- EDUCATION

April

13 **RICHARD D. MOE ORGAN
RECITAL SERIES** LCH

Sun at 3 pm

16 **KEYBOARD STUDENTS RECITAL** LCH

Wed at 7:30 pm

22 **STEEL BAND** LCH

Tues at 7:30 pm

23 **PERCUSSION ENSEMBLE** LCH

Wed at 7:30 pm

29 **BENSON LECTURE:
CYNTHIA LEITICH SMITH** AUC

Tues at 7 pm in CK Room 214

Free and open to all members of the community

Cynthia Leitich Smith (Mvskoke Nation) is a NSK Neustadt Laureate, Southern Miss Medallion winner, and the author-curator of Heartdrum, a Native-focused imprint at HarperCollins Children's Books. She's a bestselling author and her latest title is *On a Wing and a Tear*.

16 **GALLERY EXHIBITION:
SENIOR CAPSTONE EXHIBITION** UG

Wed, Apr 16 - Wed, May 23

Opening Reception: Wed, Apr 16, 5-7 pm

Please join the Department of Communication, Media & Design Arts to celebrate the accomplishments of graduating artists in the culmination of their degree program.

24 **FEATURED STUDENT SERIES:
KEN LUDWIG'S SHERWOOD:
THE ADVENTURES OF ROBIN HOOD** ST

Thurs, Apr 24 - Sat, Apr 26 at 7:30 pm

Presented by Alpha Psi Omega

Directed by Parker Brown

The immortal story of Robin Hood, told through the lens of comedy and immersion! Thrills, romance, laughter, action! It's an adventure you don't want to miss.

SUNDAY	MONDAY	TUESDAY	WEDNESDAY	THURSDAY	FRIDAY	SATURDAY
30 MARCH	31	1 APRIL	2	3	4	5
6	7	8	9	10	11	12 PASSOVER
13 Richard D. Moe Organ Series	14	15	16 Senior Exhibition April 16 - May 23 Opening Reception: 5 - 7 pm Keyboard Students Recital	17	18	19
20 EASTER	21	22 Steel Band	23 Percussion Ensemble	24 25 26 <i>Sherwood: The Adventures of Robin Hood</i>		
27 University Singers & Knights Chorus	28	29 Benson Lecture: Cynthia Leitich Smith University Chorale	30	1 MAY Choir of the West	2 <i>DANCE 2025</i> Sølvvinden Flute Ensemble	3 Schmidt Vocal Competition Guitar Orchestra & Guitar Ensemble

- 27 **UNIVERSITY SINGERS & KNIGHTS CHORUS** LCH
Sun at 3 pm
- 29 **UNIVERSITY CHORALE** LCH
Thurs at 7:30 pm

FACULTY SPOTLIGHT
JUNICHI TSUNEOKA

*Director of Innovation Studies,
Assistant Professor of Design*

Junichi Tsuneoka has been producing illustrative graphic design work nationally and internationally for the last 15 years. A partial client list includes: Nike, Adidas, Brooks, Google, Microsoft, Yahoo!, Publicis, Seattle's Best Coffee, National Geographic, among others. The 2024-25 academic year will be Tsuneoka's first as the Director of Innovation Studies.



- MUSIC
- ART & DESIGN
- THEATRE & DANCE
- EDUCATION



Music Education major, Jessa Delos Reyes '24 celebrates before commencement ceremony, 2024

May

- 1 GALLERY EXHIBITION: **SENIOR CAPSTONE EXHIBITION** UG
Ongoing through May 23
- 1 **CHOIR OF THE WEST** LCH
Thurs at 7:30 pm
- 2 **SØLVVINDEN FLUTE ENSEMBLE** LCH
Fri at 7:30 pm
- 2 SPOTLIGHT SERIES: **DANCE 2025** EA
Fri, May 2 - Sat, May 3 at 7:30 pm
Sarah Seder, Concert Executive Director
A dynamic and spectacular night of dance with choreography by faculty, guest artists, and students.
- 3 **SCHMIDT VOCAL COMPETITION** MBR
Sat
- 3 **GUITAR ORCHESTRA & GUITAR ENSEMBLE** LCH
Sat at 7:30 pm
- 4 **UNIVERSITY WIND ENSEMBLE** LCH
Sun at 3 pm
- 6 **SAXOPHONE QUARTETS & JAZZ COMBOS** AUC
Tues at 6 pm in The Cave
- 7 **PIANO ENSEMBLE** LCH
Wed at 7:30 pm
- 8 **UNIVERSITY SYMPHONY ORCHESTRA** LCH
Thurs at 7:30 pm
- 9 **THE FAIRY QUEEN** EA
By Henry Purcell
Fri, May 9 - Sat, May 10 at 7:30 pm

PLU Opera presents Henry Purcell's adaptation of Shakespeare's beloved play, *A Midsummer Night's Dream*. Jim Brown directs.
- 10 **WOODWIND STUDENTS RECITAL** LCH
Sat at 3 pm
- 10 **BRASS STUDENTS RECITAL** LCH
Sat at 4:30 pm

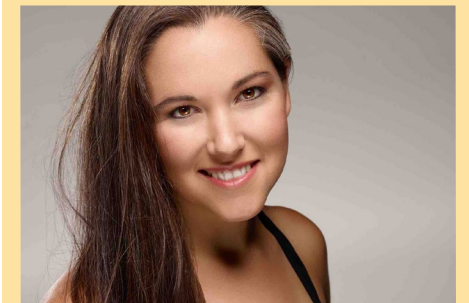
SUNDAY	MONDAY	TUESDAY	WEDNESDAY	THURSDAY	FRIDAY	SATURDAY
27 APRIL Senior Exhibition <i>Ongoing through May 23</i> University Singers & Knights Chorus	28	29 Benson Lecture: Cynthia Leitch Smith University Chorale	30	1 MAY Choir of the West	2 DANCE 2025 Sølvvinden Flute Ensemble	3 Schmidt Vocal Competition Guitar Orchestra & Guitar Ensemble
4 University Wind Ensemble	5	6 Saxophone Quartets & Jazz Combos	7 Piano Ensemble	8 University Symphony Orchestra	9 The Fairy Queen by Henry Purcell	10 Woodwind Students Recital Brass Students Recital
11 Chamber Music Kaleidoscope String Kaleidoscope	12	13 University Concert Band	14 University Jazz Ensemble	15	16	17 Choral Union
18 Choir International Tour Concert Composers Forum	19	20	21	22	23	24
25	26 MEMORIAL DAY	27	28	29	30	31

- 11 **CHAMBER MUSIC KALEIDOSCOPE** LCH
Sun at 6 pm
- 11 **STRING KALEIDOSCOPE** LCH
Thurs at 7:30 pm
- 13 **UNIVERSITY CONCERT BAND** LCH
Tues at 7:30 pm
- 14 **UNIVERSITY JAZZ ENSEMBLE** EA
Wed at 7:30 pm
- 17 **CHORAL UNION** LCH
Sat at 7:30 pm
- 18 **CHOIR INTERNATIONAL TOUR CONCERT** LCH
Sun at 3 pm
- 18 **COMPOSERS FORUM** LCH
Sun at 7:30 pm

FACULTY SPOTLIGHT
SARAH SEDER

Resident Assistant Professor of Dance

Before her arrival at PLU, Sarah co-founded and co-directed Seattle-based Sapience Dance Collective from 2008-2016. Her work has been seen at On The Boards and Meany Hall and she has performed in the work of Pat Graney, Marlo Martin, and Wade Madsen among others. She is also a reviewer of jazz dance submissions for YoungArts performing arts competition.



- MUSIC
- ART & DESIGN
- THEATRE & DANCE
- EDUCATION

June

SUNDAY	MONDAY	TUESDAY	WEDNESDAY	THURSDAY	FRIDAY	SATURDAY
1	2	3	4	5	6 EID AL-ADHA	7
8	9	10	11	12	13	14
15	16	17	18	19 JUNETEENTH	20	21
22	23	24	25	26	27	28
29	30	1	2	3	4	5

July

SUNDAY	MONDAY	TUESDAY	WEDNESDAY	THURSDAY	FRIDAY	SATURDAY
29	30	1	2	3	4 INDEPENDENCE DAY	5
6	7	8	9	10	11	12
13	14	15	16	17	18	19
20	21	22	23	24	25	26
27	28	29	30	31	1	2



August

SUNDAY	MONDAY	TUESDAY	WEDNESDAY	THURSDAY	FRIDAY	SATURDAY
27	28	29	30	31	1	2
3	4	5	6	7	8	9
10	11	12	13	14	15	16
17	18	19	20	21	22	23
24 31	25	26	27	28	29	30

Contact

College of Professional Studies

profstudies@plu.edu ▪ 253-535-7150
Cameron Bennett, Dean
plu.edu/professional-studies

School of Business

business@plu.edu ▪ 253-535-7244
Mark Mulder, Dean
plu.edu/busa

Department of Communication, Media & Design Arts

cmda@plu.edu ▪ 253-535-7573
Heather Mathews, Chair
plu.edu/cmda

School of Education

educ@plu.edu ▪ 253-535-7282
Jan Weiss, Associate Dean
plu.edu/education

School of Music, Theatre & Dance

music@plu.edu ▪ 253-535-7602
Brian Galante, Associate Dean
plu.edu/music
theatre-dance@plu.edu ▪ 253-535-7772
Amanda Sweger, Theatre & Dance Chair
plu.edu/theatre-dance

Innovation Studies

jtsuneoka@plu.edu ▪ 253-535-7778
Junichi Tsuneoka, Director
plu.edu/innovation-studies

Cover Art: *DANCE 2024*

Design by Liza Conboy

Back Cover Art: *Jasper in Deadland, 2024*

Photos by Sy Bean, Emma Stafki & Joseph Lambert

Pacific Lutheran University does not discriminate in the administration of any of its educational programs, admissions, scholarships, loans, or other activities or programs on the basis of race, gender, sexual orientation or preference, national or ethnic origin, color, disability, marital status, age, or religious belief.

Questions regarding Title IX may be directed to the Title IX Coordinator, titleix@plu.edu, 253-535-7187. Questions may also be referred to the Department of Education, Office of Civil Rights, 400 Maryland Ave. S.W., Washington, DC 20202.

The dates of certain religious holidays may vary by one day dependent upon the observed moon phase.



